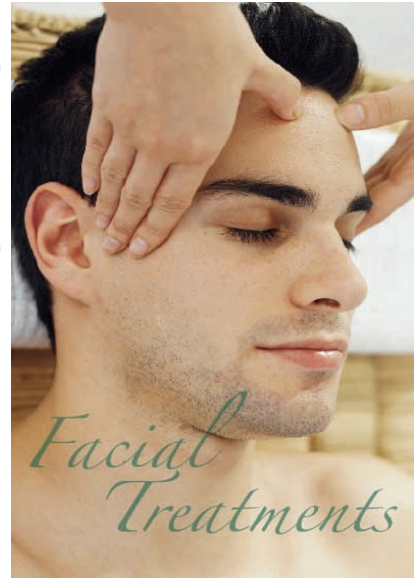




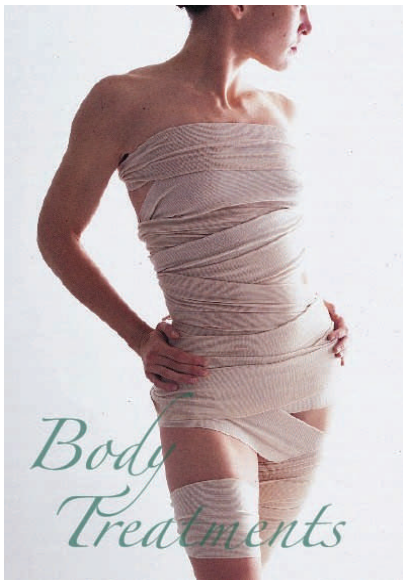


*Signature  
Treatments*

REPÊCHAGE®  
Beauty From The Sea®



*Facial  
Treatments*



*Body  
Treatments*



*Hair  
Removal*



*Hands  
& Feet*

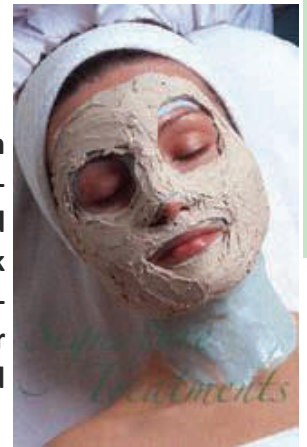


*Massage*

## **The Repêchage® Four Layer Facial® with hand Treatment**

The premier rejuvenating spa experience. Two massages with sea collagen serum and rich nourishing cream followed by a layer of fresh European seaweed mask freshly prepared just at the time of application will soothe and restore your complexion. The Grande finale is a thermal mineral rich mask that will help you totally relax. While the facial treatment provides total rejuvenation, enjoy a “facial” for your hands. You will receive a Shea Butter and anti-oxidant Sea Spa™ hand massage. Later awake to a visibly renewed you, immediate results, and long term benefits.

- 75 MINUTES -



## **Repêchage® Vita Cura™ 5 Phase Firming Facial with Micropeel**

Provides an instant trigger to younger looking skin. Specifically designed to invigorate, lift and firm mature skin. An Enzymatic Micropeel helps uncover a vibrant complexion. Two massages and a cool, Spirulina Seaweed Mask with clinically proven bio-mimetic P3ntapeptide firm and smooth the skin. Then the skin is treated with Vita Cura Opti-Lift Serum for immediate and visible results. Long term benefits to preserve elasticity, improve oxygenation and help promote cell renewal. The Vita Cura 5 Phase Firming Facial provides advanced skin repair, a true alternative to surgical rejuvenation.

- 70 MINUTES -

## **Peppermint Sea Twist®**

America’s Best Award Winning treatment with fresh seaweed and triple mints to improve circulation, slimming and toning. The combination of freshly harvested seaweed and peppermint essential oils will stimulate, rejuvenate and purify the skin. This treatment is great for sore, aching muscles and water retention.

- 90 MINUTES -

## **Sea Escape Stone Facial & Body Therapy**

Creates a yin yang balance throughout your body by using both hot and cold Sea Stones. Complete face and body rejuvenation. Fresh European seaweed tones and firms the skin for dramatic and long term results. A relaxing foot and hand massage completes this treatment, releasing tension, stress, and improving overall well-being. The ultimate spa experience.

- 90 MINUTES -

## **Sea of Cortez Pure Body Revival**

The ultimate body and facial Anti-stress treatment. Combining the ancient Ayurvedic hot oil therapy with hot stone relaxing massage followed by a cooling cryo-moisture mask. Awakens the senses with pure sea energy to create the ultimate body indulgence.

- 90 MINUTES -



### **10-Step Four Layer Facial w/ Deep Pore Cleansing**

This facial has all the benefits of the world famous Four Layer Facial, with an additional European deep pore cleansing and exfoliation to rid the skin of comedones. This anti-aging treatment will leave your skin cleansed and refreshed. **ALSO AVAILABLE W/RAPIDEX - For All Skin Types.**

- 90 MINUTES -

### **Vita Cura™ 5 Phase Firming Facial**

An Enzymatic Micropeel helps uncover a vibrant complexion. Two massages and a cool Spirulina Seaweed Mask to firm and smooth the skin. Long term benefits to preserve elasticity, improve oxygenation, and help promote cell renewal. **For All Skin Types.**

- 70 MINUTES -

### **Repêchage® Four Layer Facial w/ Hand Treatment**

The Premier anti-aging treatment. Experience layer upon layer of pure, fresh European seaweed to rejuvenate, tone, and help firm the skin dramatically. Two massages will soothe, then enjoy a cool, pure energy seaweed mask, followed by a mineral-rich thermal mask that allows for total penetration of the layers. Immediate results and long-term benefits:

Younger looking skin with visibly renewed moisture and an afterglow that lasts. **For All Skin Types.**

- 75 MINUTES -

### **Hydra Medic Facial**

Deep pore cleansing along with a mask that combats blackheads. To effectively treat problem skin, a series of 6 treatments is recommended in conjunction with a customized home care routine for best results. **For Problem/Oily Skin.**

- 75 MINUTES -

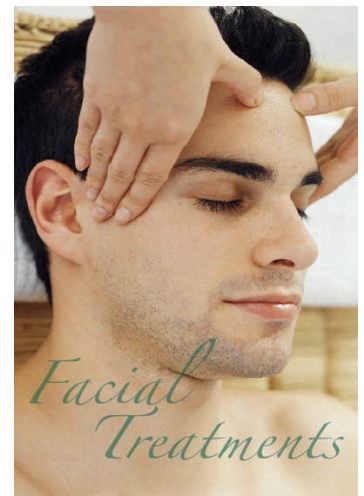
### **Classic European Facial**

Cleanses, tones, and moisturizes skin deep down with formulations chosen personally by a Repêchage® skin expert based on your skin type. **For Combination Skin.**

- 60 MINUTES -

### **Hydra Refine Facial**

Controls oil, rids skin of impurities, and helps to eliminate future breakouts. Seaweed, lemon-grass, and cucumber leave the skin feeling refreshed, renewed, and ultra-clean. **For**



## Renewal Facial

A refreshing treatment for dry, sun-damaged skin. Fresh seaweed, a gentle marine hydroxy acid combined with natural alpha hydroxy acids to exfoliate and renew... leaves skin supple and younger looking. Though immediate results are visible, a course of six treatments is recommended for optimal skin renewal benefits. *For Dry/Sun-Damaged Skin.*

- 55 MINUTES -

## Hydra 4® Facial

Calms, soothes, and protects “stressed out” complexions while helping to decrease skin sensitivity. Olive oil and olive leaf extracts provide superior anti-oxidant protection while nourishing seaweed retrains the skin to be less sensitive and builds resistance to external factors. *For Sensitive Skin.*

- 55 MINUTES -

## Hydra Dew Express Lift

Provides immediate, 100%, in-depth moisturization and superior anti-oxidant protection. Boosts moisture content while combating hyper-pigmentations and wrinkles. Delivers maximum results in a minimum amount of time. *For Normal to Dry Skin.*

- 50 MINUTES -

**Ultra Sonic Facial** - A combination of micro-current and Repechage anti-aging products, restores proper muscle tone, tighten facial contours and reduce facial laxity.

- 55 MINUTES -

## Ultra Sonic Facial w/ Peel -

- 70 MINUTES -

## Après Soleil Boost

Incorporates Hydra Soleil® Deep Relief Tea Gel, a lightweight cooling gel that instantly nourishes sun-exposed skin. Then a cool, seaweed mask rich in vitamins, minerals, trace elements, and amino acids is applied to hydrate and rebalance skin. The mask is then lifted off to reveal a healthy and radiant complexion. *For All Skin Types.*

- 45 MINUTES -

## Colour Actif® Make-Up Lesson

- 45 MINUTES -



## **- Glo Chemical Exfoliation -**

It is possible to properly exfoliate the skin while repairing, rebuilding, and renewing to assist during the healing and regeneration process!

**Glo Enzyme Peel** - Freshens the skin by removing dead skin cells to reveal a radiant complexion for all skin types.

- 60 MINUTES -

**Glo Lactic 15% Peel** - Offers exfoliating and moisture retention properties and will promote softer, smoother skin as well as improvement in the appearance of fine lines.

- 65 MINUTES -

**Glo Salicylic 30% Peel**- A medium exfoliant that deeply cleanses pores and aids skin in cellular renewal. Ideal for oily , acneic, hyper-pigmentation and mild rosacea skin types.

- 65 MINUTES -

**Glo Glycolic 30% Peel** - Promotes the repair and regeneration of skin - Improves the appearance of aging skin, as well as uneven texture and tone.

- 65 MINUTES -



## **- Microdermabrasion -**

A safe and effective non-surgical treatment that removes superficially damaged skin.

**Express Treatment** - Also called the “lunch-time peel”, this is a mini resurfacing treatment.

- 30 MINUTES -

**W/ Seaweed Facial** - Includes a replenishing mineral mask to rehydrate the skin and reduce any redness post abrasion.

- 60 MINUTES -

**Deluxe** - A powerful treatment enhanced by an enzyme peel for a deeper exfoliation and layering of protein masks to stimulate and revitalize dull and lackluster skin complexions. Minimizes pores, controls breakouts and elasticity. A series of deluxe microderm-abrasion facials are a perfect way to jumpstart sun-damaged, sluggish and aging skin.

- 75 MINUTES -





### **Seaweed Firming Body Treatment**

The Heavenly way to relieve stress, sore and stiff muscles. Based on European Thalassotherapy, fresh seaweed is warmed to body temperature and then smoothed over the body. Then a warm thermal blanket is wrapped around to help relieve stress and invigorate stiff muscles. A shower completes the experience...leaving you feeling newly recharged and balanced.

- 90 MINUTES -

### **Pomegranate Cran-Apple All-Over Body Scrub**

Pure cane sugar with potent anti-oxidants derived from organic pomegranate juice, organic whole cranberry and apple create a gentle, natural exfoliant that leaves the skin deliciously smooth and delectably radiant. Repêchage® Pomegranate Cran-Apple All-Over Body Scrub is vigorously massaged over entire body, leaving skin smooth and ultra touchable.

- 60 MINUTES -

### **Honey Body Polish**

Pure honey, almonds, and fresh buttermilk naturally cleanses and exfoliates the skin, helping to purify and slough off dead skin cells. After a warm shower, a luxurious seaweed cream is massaged into the body, leaving the skin touchable and silky smooth.

- 90 MINUTES -

### **Sea Spa Salt Glow**

Complete body exfoliation with dead sea salts and seaweed from head to toe. Removes rough, dry skin and leaves skin smooth and refreshed.

- 60 MINUTES -





### **Spa Manicure**

Treat yourself to this classic manicure featuring a luxurious warm soak, cuticle care, nail shaping, and hand massage. This service includes a polish application of your choice.

- 60 MINUTES -

### **Spa Pedicure**

Indulge in this classic pedicure featuring warm, therapeutic jet soak, cuticle care, nail shaping, and rejuvenating foot massage. This service includes a polish application of your choice.

- 60 MINUTES -

### **Anti-Aging Hand Treatment**

An exfoliating and deep hydrating treatment that is combined with a tension-relieving hand massage for maximum benefits. Hands look and feel smoother, revitalized, and youthful.

- 30 MINUTES -

### **French Manicure/Pedicure**

For a more sophisticated style select this French Manicure. This service includes an application of pale polish over the nail and white polish applied to the tips only.

- 60 MINUTES -

### **Gentleman's Manicure**

- 45 MINUTES -

### **Gentleman's Pedicure**

- 45 MINUTES -

### **Polish Change Hands & Toes**

- 20 MINUTES EACH -

**\*ADD SEAWEED MASK OR PARAFFIN TO ANY MANICURE!\***



Enjoy the delicious aroma of chocolate hazelnut wax during your service with our Aromatherapy European wax that significantly reduces the discomfort and redness commonly associated with waxing.



### **FACIAL WAXING**

**Combo Facial w/ Wax**  
- 75 MINUTES -

**Eyebrow Shaping**  
- 25 MINUTES -

**Eyebrow Wax**  
- 15 MINUTES -

**Full Face Wax**  
- 45 MINUTES -

**Lip Wax**  
- 10 MINUTES -

**Cheek Wax**  
- 20 MINUTES -

**Chin Wax**

### **UPPER BODY**

**Full Back Wax**  
- 55 MINUTES -

**Half-Arm Wax**  
- 45 MINUTES -

**Underarm Wax**  
- 30 MINUTES -

### **LOWER BODY**

**Full Leg and Deep Bikini Wax**  
- 90 MINUTES -

**Full Leg and Bikini Wax**  
- 80 MINUTES -

**Full Leg Wax**  
- 70 MINUTES -

**Half-Leg and Deep Bikini Wax**  
- 60 MINUTES -

**Half-Leg and Bikini Wax**  
- 55 MINUTES -

**Half-Leg Wax**  
- 50 MINUTES -

**Deep Bikini Wax**  
- 30 MINUTES -

**Bikini Wax**  
- 20 MINUTES -



## Hot Stone Massage

Uses heated basaltic river rocks as massage tools to provide deep penetrating heat at specific locations on the body.

- 90 MINUTES -

## Swedish Massage

This wellness massage refers to a collection of techniques customized for your individual needs. It revitalizes the skin and nervous system while at the same time relaxing the nerves themselves.

- 30/60 MINUTES -

## Deep Tissue Massage

Techniques which utilize deep tissue/deep muscle massage are administered to affect the sub-layer of musculature and fascia.

- 30/60 MINUTES -

## Couples Massage

Separate massages for you & a guest side-by-side.

- 60 MINUTES -

## Pregnancy Massage

A great way to relieve the stresses from profound physical or mental changes that occur during pregnancy. Designed to relieve aches in the back, neck, hips, legs, and weight-bearing joints.

- 60 MINUTES -

## Craniosacral Therapy

Using low pressure, this type of therapy addresses the imbalances in the craniosacral system. Helpful for Migraine Headaches, Parkinson's Disease, MS, and Cerebral Palsy.

- 60 MINUTES -

## Foot Reflexology

Based on the reflex points of the feet that correspond to certain parts of the body, such as internal organs and joints. Manipulating these parts of the feet can have direct effects on corresponding parts of the body.

- 30 MINUTES -

## Chair Massage, per minute

- Up to 15 MINUTES

**ALSO AVAILABLE:** Sports Massage and Muscle Therapy



### SPA HOURS:

Monday	Closed
Tuesday	10 - 7
Wednesday	10 - 7
Thursday	10 - 8
Friday	10 - 5
Saturday	9 - 4
Sunday	Closed

*Last appointment scheduled 1 hour prior to close.*

### **- Disclaimer-**

- All treatments are done by well-trained, certified massage therapists or estheticians.
- Please arrive 15 minutes before your appointment. Failure to arrive on time will forfeit all of part of your service at no reduction in cost.
- Please allow at least a 24 hour consideration regarding cancellation of appointments. Failure to cancel your scheduled appointment will result in a charge for the full value of your service.
- Children under 18 are allowed only when receiving services. On-site childcare is available for a fee during regular childcare hours.
- Service times include the time necessary for dressing and undressing.
- Please turn off cell phones while in the Day Spa.
- No cash refunds will be issued.
- Retail products are not refundable.
- Spa hours and prices are subject to change.

5310 Merchandise Drive - Fort Wayne, IN 46825

